

# Clip · Clip F · Clip Flow

LIGHT-CURING FILLING MATERIAL FOR TEMPORARY RESTORATIONS



# Clip · Clip F · Clip Flow

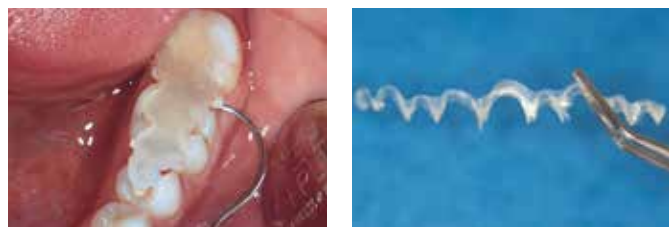
## SAVING TIME IN YOUR DENTAL CLINIC

Clip, Clip F and Clip Flow are the ideal composite materials for temporary fillings of all types. Their indications reach from application in inlay / onlay technique to repeated temporary obturations in endodontic treatment. Clip Flow can, in addition, be used for relining, as a block out material, for covering the gingival margin, for fixing resin matrices during filling placement, and for sealing root canal orifices.

### Saving time in your dental clinic

Clip is a restorative material for clean, temporary obturations.

The procedure of applying the material saves time as it can be cured using a halogen or LED polymerisation light. More over Clip remains elastic after curing and can be removed in one piece with a suitable instrument before permanent treatment of the cavity.



Easy removal in one piece for all indications

Source: Dr. Peter Bastobbe, Mainleus / Germany

Furthermore, the excellent seal provided by Clip protects from undesirable food particles and bacteria entering the cavity. Thus, Clip combines many advantages in one material. The process of treatment becomes simpler for you, and less time-consuming. Points in favour of Clip are its uncomplicated handling, its highly economical properties, the saving of material, and the simple removal of the provisional filling.

### Clip in inlay / onlay technique

One advantage of all products in the Clip range is their simple use for the purposes of the inlay / onlay technique. As Clip can be removed in one piece, there is no need to use a drill to remove the temporary filling from the cavity. Thus, the cavity remains unchanged by the removal of Clip, and there is no adverse effect on the fit of the definitive restoration.



Application of Clip Flow into the cavity



Result

### Endodontic treatments

Clip products are also utilised in endodontics: in prolonged root treatment requiring more than one sitting Clip provides a saliva-proof seal for the cavity and thus protects it from germinal invasion. Here, too, the simple and time-saving handling of the material is advantageous during repeated sealing and re-opening in endodontic treatment.

### Clip F – Fluoride-releasing

Clip F additionally contains fluorides; hence Clip F combines the advantages of Clip and those of a continued release of fluorides inside the freshly prepared cavity.

## Clip Flow

### VERSATILE AND FLOWABLE

#### Clip Flow as a relining material

Clip Flow is excellent for relining temporary crowns and bridges, guaranteeing perfect fit until the definite treatment is carried out.

#### Clip Flow as a block out material

Before taking impressions, for example, Clip Flow is the ideal material for blocking out retentive areas in the dental arch. With Clip Flow taking impressions can be considerably simplified.



Application of Clip Flow



Polymerisation



Blocked out interdental spaces



Removal of Clip Flow

#### Gingiva protection with Clip Flow

In order to protect the teeth during, for example, the application of in-office whitening products, Clip Flow can be used for gingiva protection. It acts as a barrier for the whitening product and protects the surrounding soft tissue and teeth which are not to be whitened. Covering the gingival margin with Clip Flow is quick and simple.



Application of gingiva protection



Removal in one piece

#### Fixing of resin matrices with Clip Flow

Clip Flow allows the simple fixing of resin matrices to optimally hold them in place during placement of the filling.



Fixing the matrix



Restoring form and function of the tooth

Source: Dr. Walter Denner, Fulda / Germany

#### Implant Abutments

The aperture for the connecting screw on the implant-abutment interface is frequently given a temporary seal before the definitive luting of the restoration onto the abutment. This prevents luting cement from entering the aperture and thus sealing it permanently. With Clip Flow, this can be prevented in a quick, comfortable and reversible manner.



Abutment with open aperture



Aperture sealed with Clip Flow



Light-curing of the material



Finished seal

Source: Dr. Walter Denner, Fulda / Germany

## Clip · Clip F · Clip Flow

### LIGHT-CURING FILLING MATERIAL FOR TEMPORARY RESTORATIONS

#### Indications

All types of temporary fillings

Temporary protection in inlay / onlay technique

#### Additional indications Clip Flow

Sealing of openings for implant screws

Relining material for temporary crowns and bridges

Block out material for retentive areas in the dental arch, e.g. before taking impressions

Covering of the gingival margin

Fixing of resin matrices during filling placement

Temporary filling of cavities and sealing of root canal orifices

#### Advantages

- Easy to place – easy to remove in one piece
- No damage to preparation boundaries
- Durable and saliva-proof
- Non-adhesive
- Time-saving through light-curing
- Elastic
- Flowable (Clip Flow)
- NDT® syringe (Clip Flow)

#### Presentation

##### Clip

|          |                  |
|----------|------------------|
| REF 1284 | Syringe 2 × 4 g  |
| REF 1285 | Syringe 3 × 4 g  |
| REF 1287 | Caps 25 × 0.25 g |
| REF 9301 | Dispenser – Caps |

##### Clip F

|          |                 |
|----------|-----------------|
| REF 1289 | Syringe 2 × 4 g |
| REF 1283 | Syringe 3 × 4 g |

##### Clip Flow

|          |  |
|----------|--|
| REF 1282 | Syringe 2 × 1.8 g, accessories         |
| REF 2148 | Application cannulae type 46, 100 pcs. |



VOCO GmbH  
Anton-Flettner-Straße 1-3  
27472 Cuxhaven  
Germany

Freecall: +800 44 444 555  
Fax: +49 (0) 4721-719-140

info@voco.com  
www.voco.dental

Available from: